

# A GUIDE TO PLANTING IN THE RIGHT-OF-WAY:

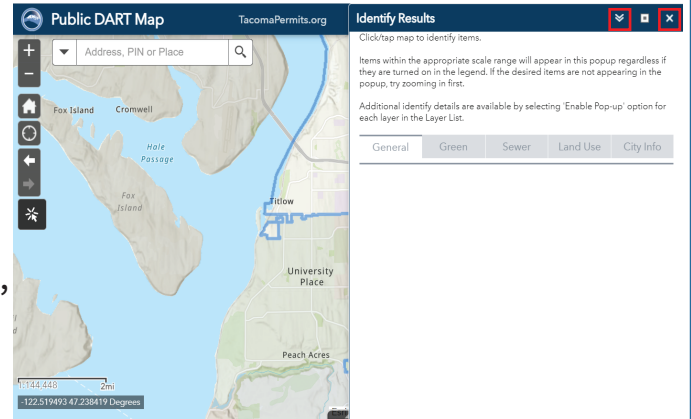
## Where Can I Plant Grit City Trees?

**Grit City Trees are only eligible to be planted in the right-of-way. The “right-of-way” is the space between the edge of the road and the edge of the property line. In many instances this looks like a “planting strip” or plantable space between the road and sidewalk. However, your property may still have plantable right of way that is less obvious. This resource is meant to guide interested program participants on defining their eligible right-of-way.**

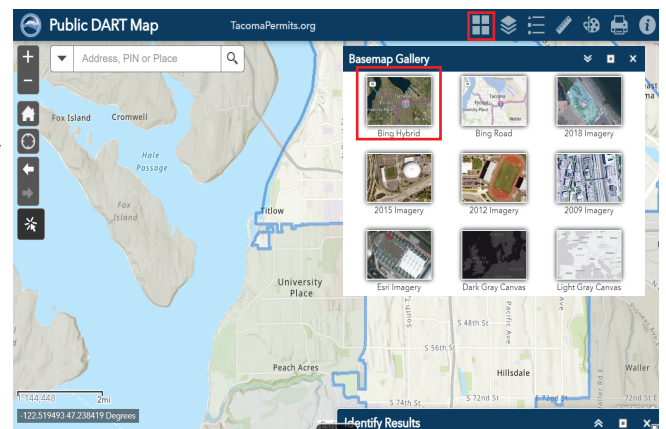
**Step 1:** Use the City’s Public DART Map to get started. In your web browser type in:

<https://dart.cityoftacoma.org/#20210121>

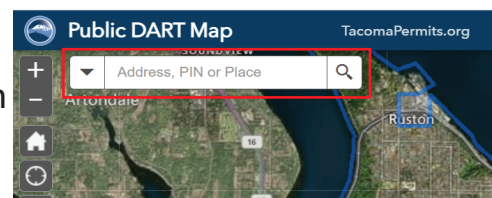
You should see this included DART Map. The default menu “Identify Results” you will not need, so minimize or close this window. You can do this by clicking the fields noted in red.



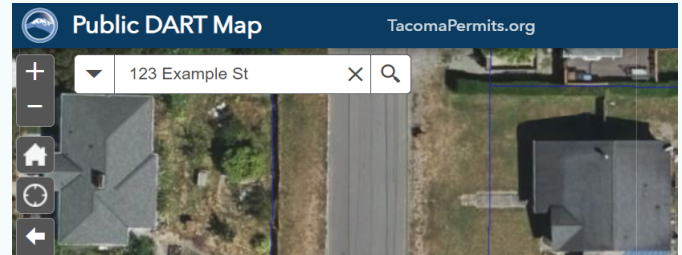
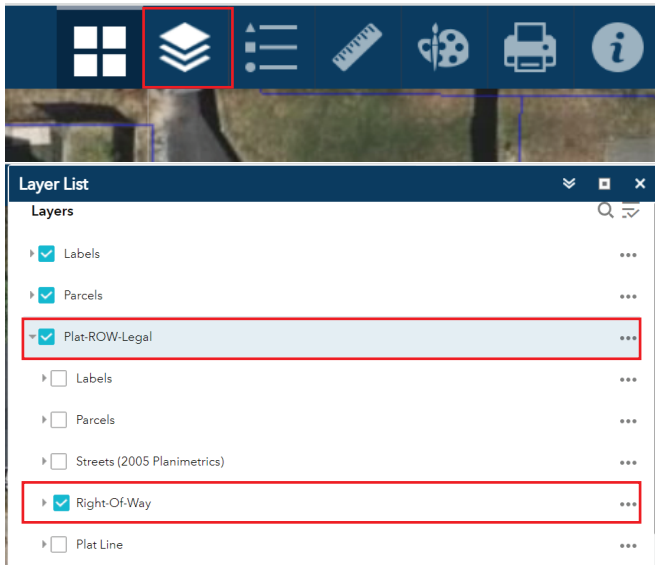
**Step 2:** Set up your map with features. Select the “Basemap” tab and click on the first ariel image basemap. This basemap will allow you to identify property features and landmarks easily.



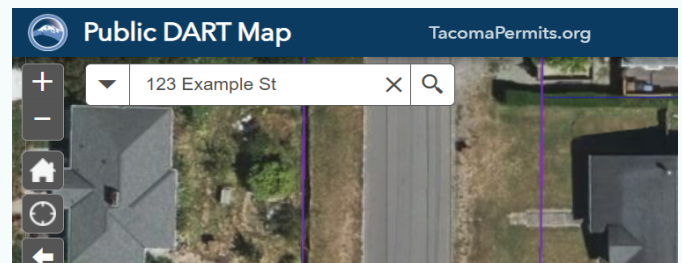
**Step 3:** You are now ready to search your planting address. Type your address in the search bar noted in red.



**Step 4:** Determine your right-of-way, by turning on the ROW layer. On the “Layer list” tab, click the drop down arrow next to “Plat-ROW-Legal”, many sub-fields will now be visible. Check the box next to the sub-field called “Right-of-way”. Your property boundary will be outlined in blue and the right-of-way boundary will be outlined in magenta/pink. Eligible right-of-way will be from the edge of the street or curb to the right-of-way boundary outlined in magenta pink.



Before clicking Right-of-Way layer



After clicking Right-of-Way layer

**Step 5:** Utilize the DART Map’s “Measure” or “Draw” tools to plan in greater detail.

**The Measure tool** allows you to measure according to your needs. On the tool bar, click the ruler symbol.



Next, select “line” as your measuring tool. Scroll down the distance unit field. Select the unit of your choice and check the box next to “Show measurement totals”.



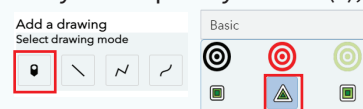
Identify where you would like to begin measuring. Click and hold down. Drag the line where you would like to end the measurement, then let go. A measurement should be visible.



**The Draw tool** allows you to mark up the map with lines and symbols. On the tool bar, click on the paint pallet symbol.



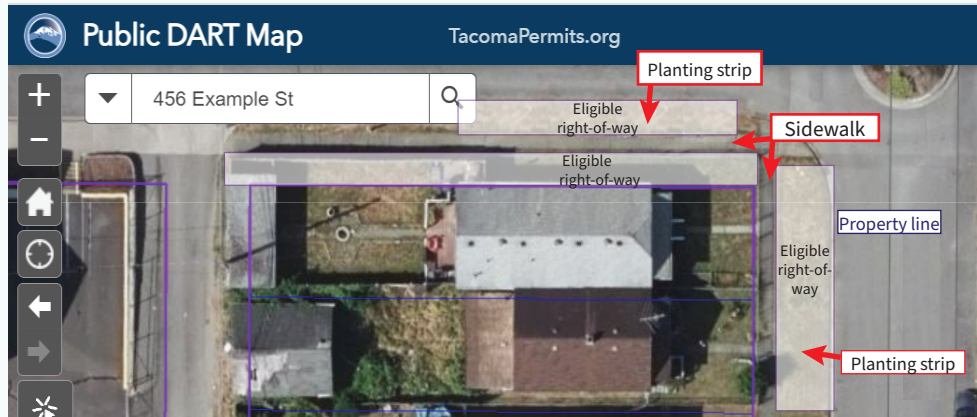
Next, select “point” and choose a symbol you would like to use to note where you will plant your tree(s), for example.



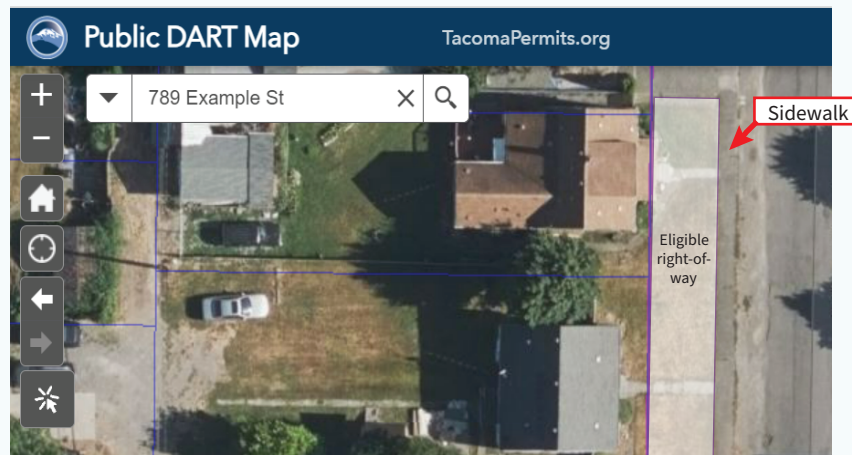
Drop the point at the desired location. To add another point, locate the + on the Draw Menu. Then, another desired location.



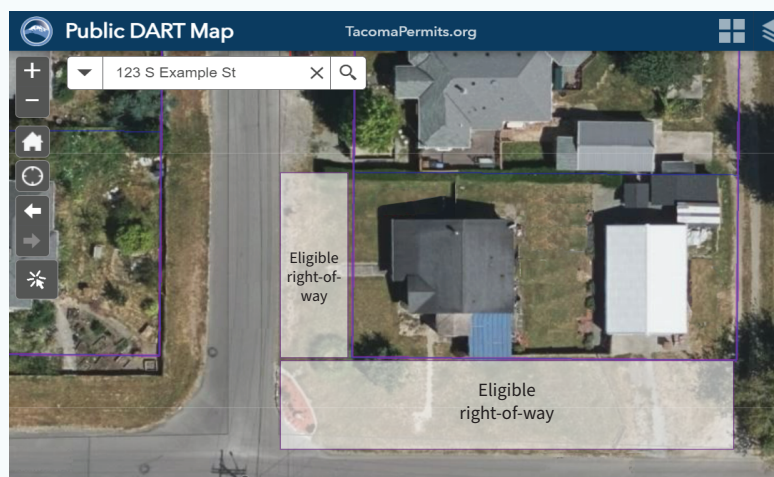
**Below are examples of different property lot layouts and their eligible right-of-ways.**



**Example 1:** House with a sidewalk and a planting strip.



**Example 2:** House with sidewalk and NO planting strip



**Example 3:** House without sidewalk or planting strip